



CENTRAL MAINE POWER

An AVANGRID Company

Joseph Purington
President and Chief Executive Officer

February 4, 2022

Ms Marlene Colvin
Chair Planning Board
Town of Pittston
38 Whitefield Rd
Pittston, ME 04345

Dear Ms Marlene Colvin:

Every day, more than 646,000 Maine homes and businesses count on Central Maine Power Company (CMP) to efficiently deliver safe, reliable electricity from a supplier of their choice over our dependable infrastructure.

Many of our customers now are signing up with community solar providers for their source of electricity as these businesses, fueled by incentives passed by the Maine Legislature, are building or looking to site community solar arrays or similar renewable projects in their towns and cities.

At CMP, we're committed to helping the State of Maine reach its renewable energy goals by working to connect hundreds of proposed new solar and other distributed generation (DG) projects to our energy delivery system.

We understand that you are busy fielding questions from developers about town ordinances, permits and other processes, and from your local residents who wonder whether the new solar array will bring a discount on their bills (only if they subscribe to it.)

Our Distributed Generation projects team has produced a website that includes answers to the questions we've been asked most often plus other information regarding CMP's roles and responsibilities in the renewable energy field. We encourage you to share our website with your residents, including on your town's website or social media pages, as a service to help them learn more. It includes links to other agency sites that can provide additional information. Our website is CMPconnectsDG.com. We've also included a few fliers to share.

Below, please find general information regarding our role, about those situations when a developer or CMP will seek permits, easements or access rights, and information about supply capacity.

CMP's Role:

CMP is not a developer of distributed generation projects, including community generation and community solar, as we are not a power generator. Our role includes:

- Connecting DG to our energy grid: CMP works with renewable energy generators to interconnect their systems with ours and distributes the electricity over our infrastructure to homes and

83 Edison Drive, Third Floor, Augusta, ME 04330
Telephone 207.629.2032, Project Info Line 888.267.0831
www.cmpco.com, Deborah.Turcotte@cmpco.com



An equal opportunity employer

businesses. A distribution line extension or upgrade may be needed, and CMP or its contractors will construct the extension or upgrade, not the developer.

- **Applying credits to utility bills:** CMP administers the bill crediting for residential, commercial and industrial customers who participate in or subscribe to a DG program, including community programs, in accordance with Maine Public Utilities Commission (PUC) rules.

The community solar developers are the primary contact with customers as these are their projects. CMP will reach out to households or businesses that may be affected by the construction of distribution line upgrades or extensions or regarding their billing credits.

Supply Capacity:

CMP has received a few questions regarding supply capacity on our system, namely “is there enough room” on our infrastructure in your area to support a generator’s interconnection. Here is a high-level answer that we hope you’ll find helpful:

Capacity is studied upon receipt of a generator’s interconnection study application to CMP. There is no hard cap on the ability for generators to interconnect to the distribution system at any given location. If during the study it is determined that a larger or additional transformer (and possibly other elements) is required to accommodate the interconnection, the costs associated with those upgrades will be included in the study results and presented to our generation customer. The generation customer then can elect to move ahead with the interconnection or withdraw.

Developers’ Responsibilities:

- **Permits:** The renewable energy developer is required to get all necessary local, state and/or federal permits for its project. If the facility requires a distribution line extension or upgrade to safely connect it to our grid, the developer or CMP will pursue any local, state, and/or federal permits that may be needed.
- **Easements:** Easements may be needed if a developer needs to extend or upgrade a distribution line. Property easements are obtained by the generator for the placement and maintenance of the line if it crosses private property, ensuring appropriate distance on each side of the line for CMP to have property access in order to perform maintenance or repairs due to an emergency.
- **Access Rights:** Developers, too, secure access rights on private properties if a road is needed to get to a renewable energy generation facility.

Please let us know if you have any additional questions. For CMP project-related questions, the Public Outreach team can be reached via our Project Information Line number at 1-888-267-0831 or email at outreach@cmpco.com. Customers with questions about their bills and credits should call our Customer Care Center at 1-800-750-4000 or visit cmpco.com.

Sincerely,



Joseph Purington
President and Chief Executive Officer
Central Maine Power Company



**CENTRAL MAINE
POWER**

MAKING CONNECTIONS
Distributed Generation

CONTACT

Project Information Line: **888.267.0831**
Project Email: **outreach@cmpco.com**
Refer to: **DG/Solar Development**
Website: **CMPconnectsDG.com**

Customer Call Center: **800.750.4000**
Hearing/Speech Impaired (TTY): **Dial 711**
Customer Call Center email:
customer.service@cmpco.com

PROJECT OVERVIEW

Central Maine Power Company (CMP) is committed to efficiently delivering safe, reliable electricity from suppliers, that customers may choose, over our dependable energy grid.

Renewable energy incentives passed by the Maine State Legislature in 2019 have led to a surge of new solar and other distributed generation (DG) projects statewide.

CMP'S ROLE

CMP supports the State of Maine's renewable energy goals and we are committed to interconnecting DG projects to the grid safely and reliably. CMP is not a developer of distributed generation projects, including community generation, as we do not generate power.

DISTRIBUTED AND COMMUNITY GENERATION

Distributed generation (DG) is electricity produced by renewable energy sources such as solar, wind, hydro, and biomass near the point of interconnection to the grid or where the power will be used. DG is unlike traditional energy delivery where power is generated at large plants, travels through a substation to be stepped down to lower voltages and is then distributed to customers in the community. DG facilities connect to distribution lines that go both directly to customers and to substations. Power travels in both directions, requiring specific attention to safety and reliability.

A subset of DG is community generation in which a project is supported by residential and/or non-residential consumers through participation or subscriptions in exchange for credits on their utility bills. The most common is community solar. Customers may contract directly with these energy companies for their electricity supply.

CREDITS AND UTILITY BILLS

Under community generation, residential and non-residential consumers can subscribe to or participate in a portion of the project in exchange for credits on their utility bills. Under one type of subscription program, the enrolled consumer earns credits for their portion of power generated and pays the business an agreed-upon rate for the credits. The credits, then, are applied to their CMP utility bill.

INTERCONNECTIONS

Since late 2019, CMP has received hundreds of applications for interconnections from dozens of solar developers. Most of these are community solar projects that will generate between 2 MW (megawatts) and 5 MW of electricity.

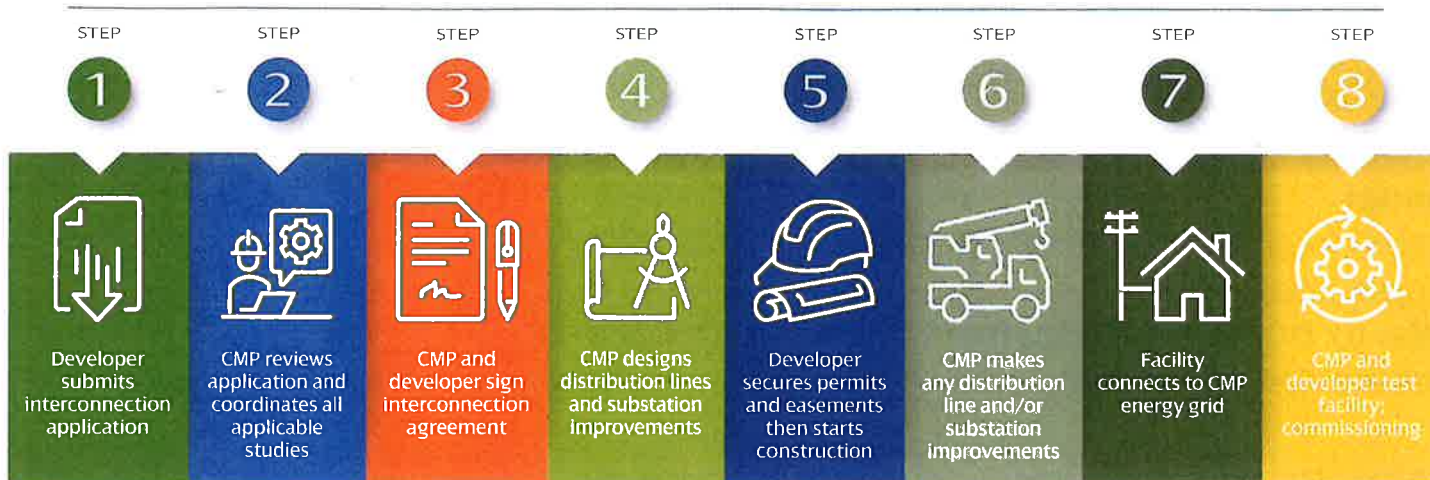
CMP follows an interconnection process established by the Maine Public Utilities Commission (PUC) that emphasizes timeliness, cost efficiency, and safety. We are a dedicated team of engineers, project managers, construction workers and others focusing solely on distribution generation projects and interconnections.

STUDIES

Once we receive an interconnection application from a solar generator, it goes through a multi-faceted application/system phase review and a design/build phase review before testing and commissioning and then energizing. More information about these phases is listed in the MPUC's Chapter 324 rules and on CMP's website under "Services and Resources" and select "Interconnection."

8 STEPS FOR MAKING CONNECTIONS

CMP and Distributed Generators



DISTRIBUTION LINES

To facilitate the interconnection of a renewable energy project to CMP's grid, a developer may need to extend or upgrade a distribution line and partner with CMP to perform this work in a safe, efficient manner. If needed, property easements are obtained by the generator for the placement and maintenance of the line if it crosses private property, ensuring appropriate distance on each side of the line for property access in order to perform maintenance or repairs due to an emergency.

PROPERTY OWNERS

CMP is not affiliated with any distributed (or community) generation business and will not approach landowners to lease their land for a project.

For distribution line upgrades or extensions, the distributed or community generator will secure the property needed for CMP to do the line work.

PERMITS

Renewable energy generators will secure any local, state and/or federal permits needed for their project. For distribution line extensions or upgrades, CMP will secure local, state, and/or federal permits, if necessary.

WORK HOURS/NOISE

For distribution line extensions or upgrades, most work will be done during daylight hours. For some projects, work may be needed at night and outages may be required. CMP will notify you. Construction noise may be present. We follow all community work and noise ordinances.

SAFETY

AVANGRID, CMP's parent company, has strict work, job site, and Covid-19 safety protocols. Also, CMP and its contractors follow local, state, and federal safety rules.